

# Natural changes of population 1961 – 2022

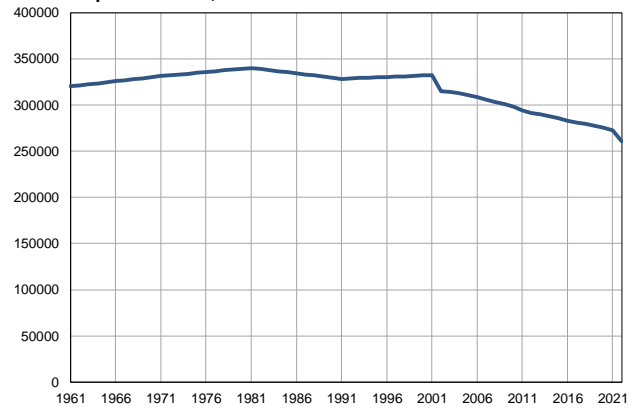
Profile  
July 2023

## South Banat

	1961	2022
Population size	320187	260906
Livebirths, Number	5631	2335
Deaths, Number	3292	4642
Natural increase, Number	2339	-2307
Infants deaths, Number	454	10
Livebirths, per 1,000 population	18	9
Deaths, per 1,000 population	10	18
Natural increase, per 1,000 population	7	-9
Infants deaths, per 1,000 livebirths	81	4

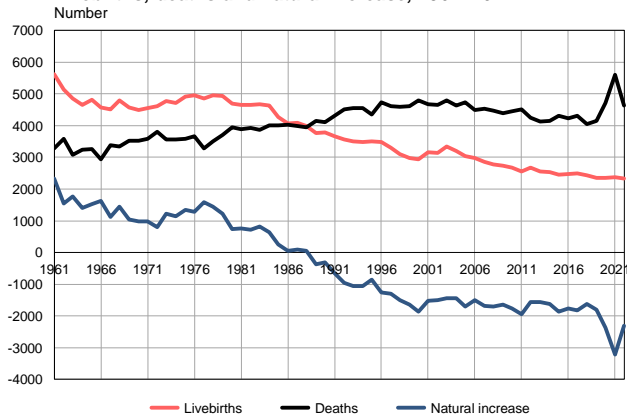
Source: Vital Statistics, SORS

Population size, 1961–2022



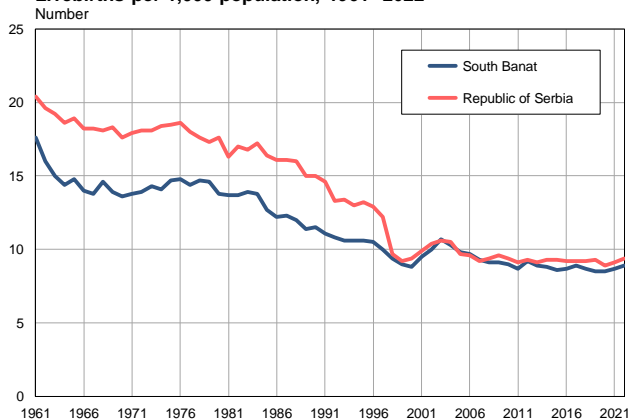
Source: Vital Statistics, SORS

Livebirths, deaths and natural increase, 1961–2022



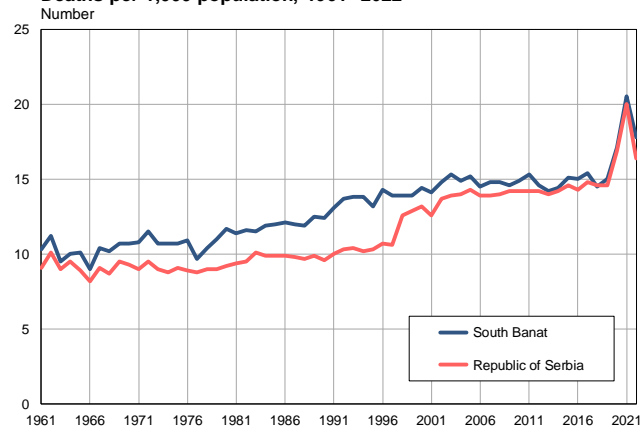
Source: Vital Statistics, SORS

Livebirths per 1,000 population, 1961–2022



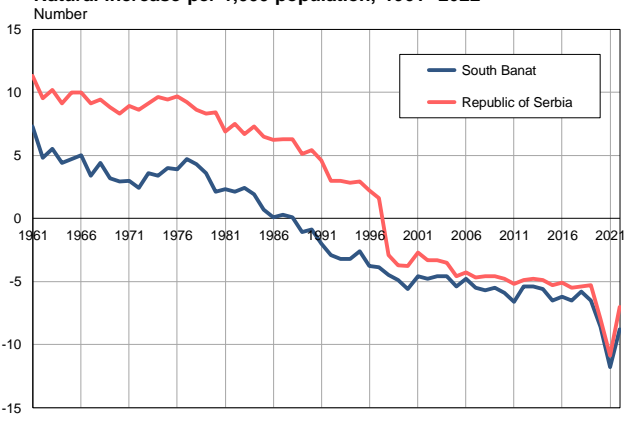
Source: Vital Statistics, SORS

Deaths per 1,000 population, 1961–2022



Source: Vital Statistics, SORS

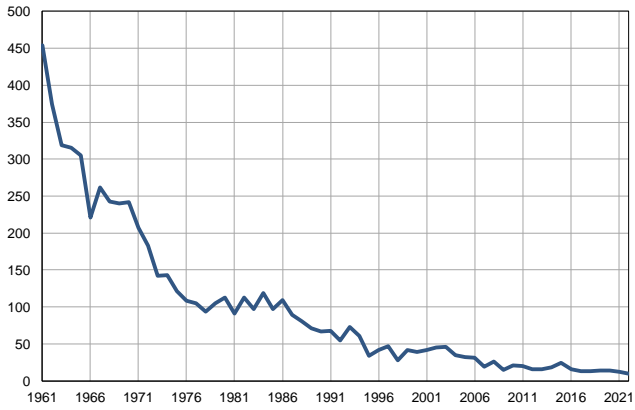
Natural increase per 1,000 population, 1961–2022



Source: Vital Statistics, SORS

**Infants deaths, 1961–2022**

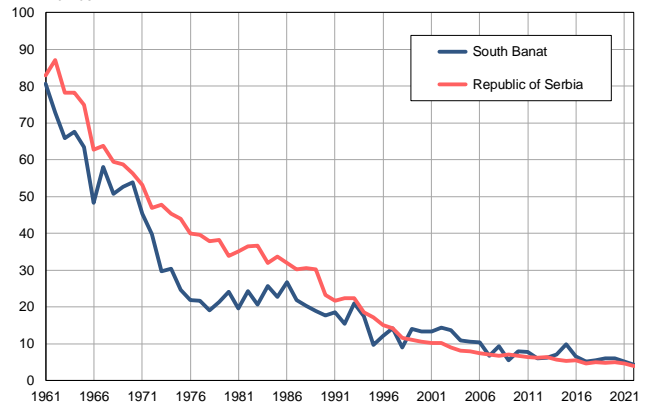
Number



Source: Vital Statistics, SORS

**Infants deaths per 1,000 livebirths, 1961–2022**

Number



Source: Vital Statistics, SORS

**Table. Natural changes of population, South Banat**

Year	Number of population	Livebirths	Deaths	Natural increase	Infants deaths	per 1000 population			Infant deaths per 1000 livebirths
						Livebirths	Deaths	Natural increase	
1961	320187	5631	3292	2339	454	17.6	10.3	7.3	80.6
1962	321297	5132	3583	1549	374	16.0	11.2	4.8	72.9
1963	322407	4847	3077	1770	319	15.0	9.5	5.5	65.8
1964	323516	4659	3245	1414	315	14.4	10.0	4.4	67.6
1965	324626	4806	3271	1535	305	14.8	10.1	4.7	63.5
1966	325736	4575	2944	1631	221	14.0	9.0	5.0	48.3
1967	326846	4521	3391	1130	262	13.8	10.4	3.4	58.0
1968	327956	4791	3346	1445	243	14.6	10.2	4.4	50.7
1969	329065	4565	3521	1044	240	13.9	10.7	3.2	52.6
1970	330175	4499	3527	972	242	13.6	10.7	2.9	53.8
1971	331285	4563	3585	978	207	13.8	10.8	3.0	45.4
1972	332175	4608	3816	792	183	13.9	11.5	2.4	39.7
1973	333066	4778	3561	1217	142	14.3	10.7	3.6	29.7
1974	333956	4705	3559	1146	143	14.1	10.7	3.4	30.4
1975	334847	4918	3583	1335	121	14.7	10.7	4.0	24.6
1976	335737	4956	3669	1287	108	14.8	10.9	3.9	21.8
1977	336627	4856	3276	1580	105	14.4	9.7	4.7	21.6
1978	337518	4948	3497	1451	94	14.7	10.4	4.3	19.0
1979	338408	4937	3712	1225	105	14.6	11.0	3.6	21.3
1980	339299	4698	3956	742	113	13.8	11.7	2.1	24.1
1981	340189	4645	3888	757	91	13.7	11.4	2.3	19.6
1982	339013	4660	3935	725	113	13.7	11.6	2.1	24.2
1983	337837	4681	3870	811	97	13.9	11.5	2.4	20.7
1984	336661	4638	4008	630	119	13.8	11.9	1.9	25.7
1985	335485	4276	4017	259	97	12.7	12.0	0.7	22.7
1986	334309	4077	4034	43	109	12.2	12.1	0.1	26.7
1987	333132	4089	3989	100	89	12.3	12.0	0.3	21.8
1988	331956	3985	3940	45	81	12.0	11.9	0.1	20.3
1989	330780	3762	4143	-381	71	11.4	12.5	-1.1	18.9
1990	329604	3791	4100	-309	67	11.5	12.4	-0.9	17.7
1991	328428	3660	4310	-650	68	11.1	13.1	-2.0	18.6
1992	328817	3564	4514	-950	55	10.8	13.7	-2.9	15.4
1993	329206	3499	4549	-1050	73	10.6	13.8	-3.2	20.9
1994	329595	3490	4555	-1065	61	10.6	13.8	-3.2	17.5
1995	329984	3506	4352	-846	34	10.6	13.2	-2.6	9.7
1996	330373	3477	4740	-1263	42	10.5	14.3	-3.8	12.1
1997	330761	3307	4605	-1298	47	10.0	13.9	-3.9	14.2
1998	331150	3110	4603	-1493	28	9.4	13.9	-4.5	9.0
1999	331539	2979	4621	-1642	42	9.0	13.9	-4.9	14.1
2000	331928	2930	4795	-1865	39	8.8	14.4	-5.6	13.3
2001	332317	3158	4681	-1523	42	9.5	14.1	-4.6	13.3
2002	314658	3146	4653	-1507	45	10.0	14.8	-4.8	14.3
2003	314082	3348	4794	-1446	46	10.7	15.3	-4.6	13.7
2004	312621	3206	4644	-1438	35	10.3	14.9	-4.6	10.9
2005	310862	3033	4734	-1701	32	9.8	15.2	-5.4	10.6

**Table. Natural changes of population, South Banat**

Year	Number of population	Livebirths	Deaths	Natural increase	Infants deaths	per 1000 population			Infant deaths per 1000 livebirths
						Livebirths	Deaths	Natural increase	
2006	308706	2980	4486	-1506	31	9.7	14.5	-4.8	10.4
2007	306133	2851	4526	-1675	19	9.3	14.8	-5.5	6.7
2008	303392	2774	4481	-1707	26	9.1	14.8	-5.7	9.4
2009	300874	2745	4384	-1639	15	9.1	14.6	-5.5	5.5
2010	298400	2675	4446	-1771	21	9.0	14.9	-5.9	7.9
2011	294043	2555	4504	-1949	20	8.7	15.3	-6.6	7.8
2012	291686	2676	4246	-1570	16	9.2	14.6	-5.4	6.0
2013	289766	2565	4128	-1563	16	8.9	14.2	-5.4	6.2
2014	287739	2531	4148	-1617	18	8.8	14.4	-5.6	7.1
2015	285597	2449	4317	-1868	24	8.6	15.1	-6.5	9.8
2016	283350	2470	4237	-1767	16	8.7	15.0	-6.2	6.5
2017	281203	2500	4319	-1819	13	8.9	15.4	-6.5	5.2
2018	279281	2427	4057	-1630	13	8.7	14.5	-5.8	5.4
2019	277393	2344	4154	-1810	14	8.5	15.0	-6.5	6.0
2020	275289	2350	4712	-2362	14	8.5	17.1	-8.6	6.0
2021	272560	2374	5594	-3220	12	8.7	20.5	-11.8	5.1
2022	260906	2335	4642	-2307	10	8.9	17.8	-8.8	4.3

Source: Vital Statistics, SORS

## Definitions

### Population size

Number of population in the respective year. The data on the number of population in 1961, 1971, 1981 and 1991 are census data, while for the inter-census years the number of population was calculated as an average inter-census difference. From 2002 are given the population estimates that were calculated according to the census of population results and the annual statistics of natural mechanical population movements.

### Livebirths

Absolute number of live births in the course of a year. Live born child means a child giving vital signs after birth (breathing, i.e. heartbeat), even for the shortest time, regardless the mother's pregnancy duration.

### Deaths

Absolute number of deaths in the course of a year. Deceased is a person that whenever after having been born live, shows permanently stopped vital signs.

### Natural increase

Natural population increase is the number of live births minus the number of deaths.

### Infants deaths

Absolute number of infants deaths in the course of a year. Deceased infant is a child that after having been born live and before aged one year, shows permanently stopped vital signs.

### Livebirths, per 1 000 population

Livebirths rate is the ratio of the number of live births and the population size in the respective year. The number of live births is divided by the population size and then multiplied by 1000.

### Deaths, per 1 000 population

General mortality rate represents the ratio between the number of deaths and the population size in the respective year. The number of deaths is divided by population size and then multiplied by 1000.

### Natural increase, per 1 000 population

Natural population increase rate is the difference between the number of live births and the number of deaths, in relation to the population size in the respective year.

Natural population increase rate = (number of live births - number of deaths) / population size \* 1000

### Infants deaths, per 1 000 livebirths

Infant mortality rate is the ratio of deceased children under 1 year of age and live births in the respective year. The mortality rate is expressed per 1000 live births.

Infant mortality rate = (number of deceased children under 1 year of age / number of live births) \* 1000

## Additional info:



Download all database data in Excel format:

[Data](#)



DevInfo profiles:

[devinfo.stat.gov.rs/SerbiaProfileLauncher/?lang=en](http://devinfo.stat.gov.rs/SerbiaProfileLauncher/?lang=en)



DevInfo online database:

[devinfo.stat.gov.rs/vitalna](http://devinfo.stat.gov.rs/vitalna)



For additional information or questions please contact:

[devinfo@stat.gov.rs](mailto:devinfo@stat.gov.rs)